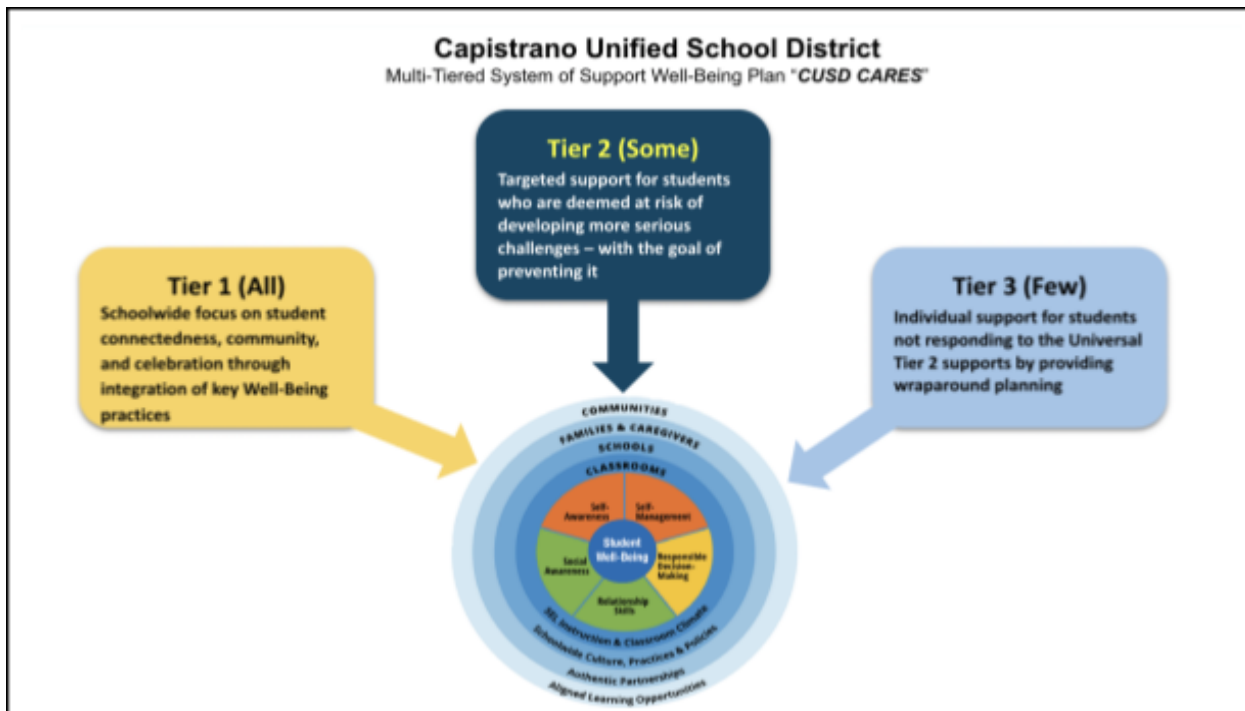
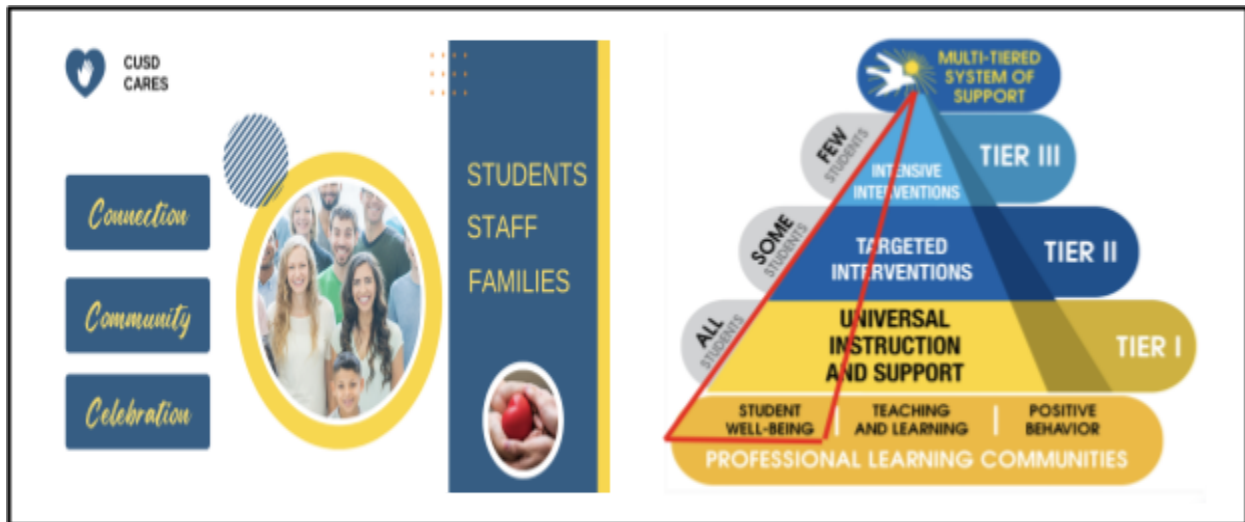


# CUSD CARES Chaparral Elementary School Multi-tiered System of Support (MTSS): Well-Being

## Purpose

**Goal:** Effectively support all students' and staff's well-being and have a positive impact on student outcomes by intentionally developing "**connections**, a **sense of community**, and **regular opportunities for celebration**"

- **Connection:** Creating a school environment where students feel connected to their peers and the adults on campus through meaningful, daily interactions
- **Community:** Establishing an inclusive school community by developing a sense of safety and belonging for students, staff, and parents, through events, programs, and organizations
- **Celebration:** Highlighting the uniqueness of students and staff through moments that acknowledge their contributions and achievements



# CUSD Chaparral Elementary School

## Multi-tiered System of Support (MTSS): Well-Being

### **Tier 1 - Universal (All Students): Schoolwide focus on student connectedness, community, and celebration through integration of key “Well-Being” practices:**

- Kindness week (February)
- “You Belong Here” attendance campaign
- Ability Awareness Day
- Counselor support through Second Step and Cultural Proficiency Lessons
- Positive Behavior Support Tier 1 Strategies and Interventions
- Chaparral Elementary School examples:
  - *Greeting students as they enter school and say good-bye as they leave*
  - *Intentional welcome for all new students and staff*
    - *Teacher greets new students and takes them to their new classroom*
    - *Counselor checks in*
      - *New Student Lunch event at the beginning of the year*
    - *Admin checks in*
  - *Staff and students participate in spirit activities and other school events*
    - *Every Friday is school spirit day*
  - *PBIS, academic, and extracurricular student recognitions*
    - *PBIS expectation rotations focused on the PBIS Matrix (Be a Champion)*
    - *PBIS Champion Tickets (Respectful, Responsible, and Ready to Learn)*
    - *PBIS Store (monthly)*
    - *PBIS Champion of the Month*

### **Tier 2 - Targeted (Some Students): Targeted support for students who are at risk of developing more significant challenges**

- Staff Mentor
- Sensory Rooms
- Targeted group counseling (Counselors & Intervention Specialists)
- Referral to counselor
- Restorative Practices
- Positive Behavior Support Tier 2 strategies and interventions
- Chaparral Elementary School examples:
  - *Daily check-ins with mentor*
  - *Group discussions (Counselor)*
  - *Student-Family-Site collaboration*

### **Tier 3 - Intensive: Individual and intentional support for students not responding to the Tier 2 supports by providing comprehensive planning and services**

- Individual 1:1 Counseling
- District Support Team (counselors, psychologists, High School Family Lead Administrators, and District Staff)
- County and outside mental health referral (with parent consent)
- Partnership with family, health provider, and school site team
- Chaparral Elementary School examples:
  - *Frequent, calendared Individual meetings with mentor, counselor, or administrator*
  - *Individual discussions (Counselor)*
  - *Student-Family-Site-District collaboration*
  - *Check-in/Check-out*